

For A Class ONLY

Browns Bay

Oua Point

Scotts Landing

Casnell Island

Sullivans Bay

Sadler Point

Saddle Island

Pudding Island

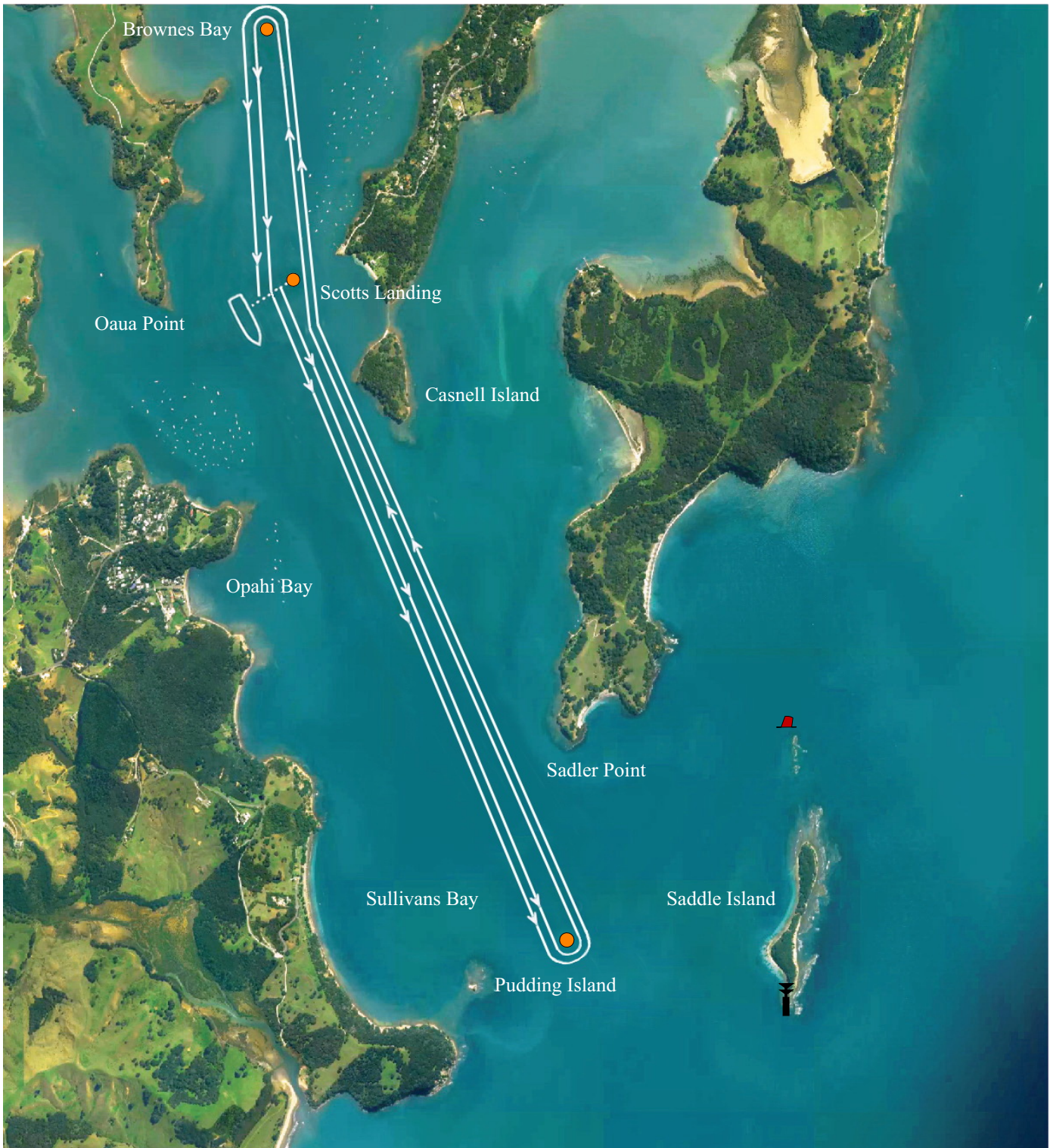
The reef at Saddle Island's northern end is marked by a red buoy and at the southern end a beacon. The ODM start buoy is a fairway mark for the second leg of the course.

Mahurangi Cruising Club Regatta - Course #4

ALTERNATIVE COURSE FOR STRONG EASTERLY CONDITIONS

For all Divisions except A Class, Te Haupa, Centreboard Classes

DIAGRAM ONLY. NOT TO BE USED FOR NAVIGATION. PLEASE CONSULT AN OFFICIAL CHART



COURSE #4 - MAIN EVENTS ALTERNATIVE COURSE FOR STRONG EASTERLY CONDITIONS

Startline is between the committee boat moored off Oua Point and the Outer Distance Mark (ODM) positioned towards Scotts Landing. Starting in a south easterly direction, take the Pudding Island Mark (set between Sullivans Bay and Saddle Island) port, then a laid mark in Brownes Bay port, going through the ODM gate port back to the Pudding Island mark port, Brownes Bay mark port, to the finish.

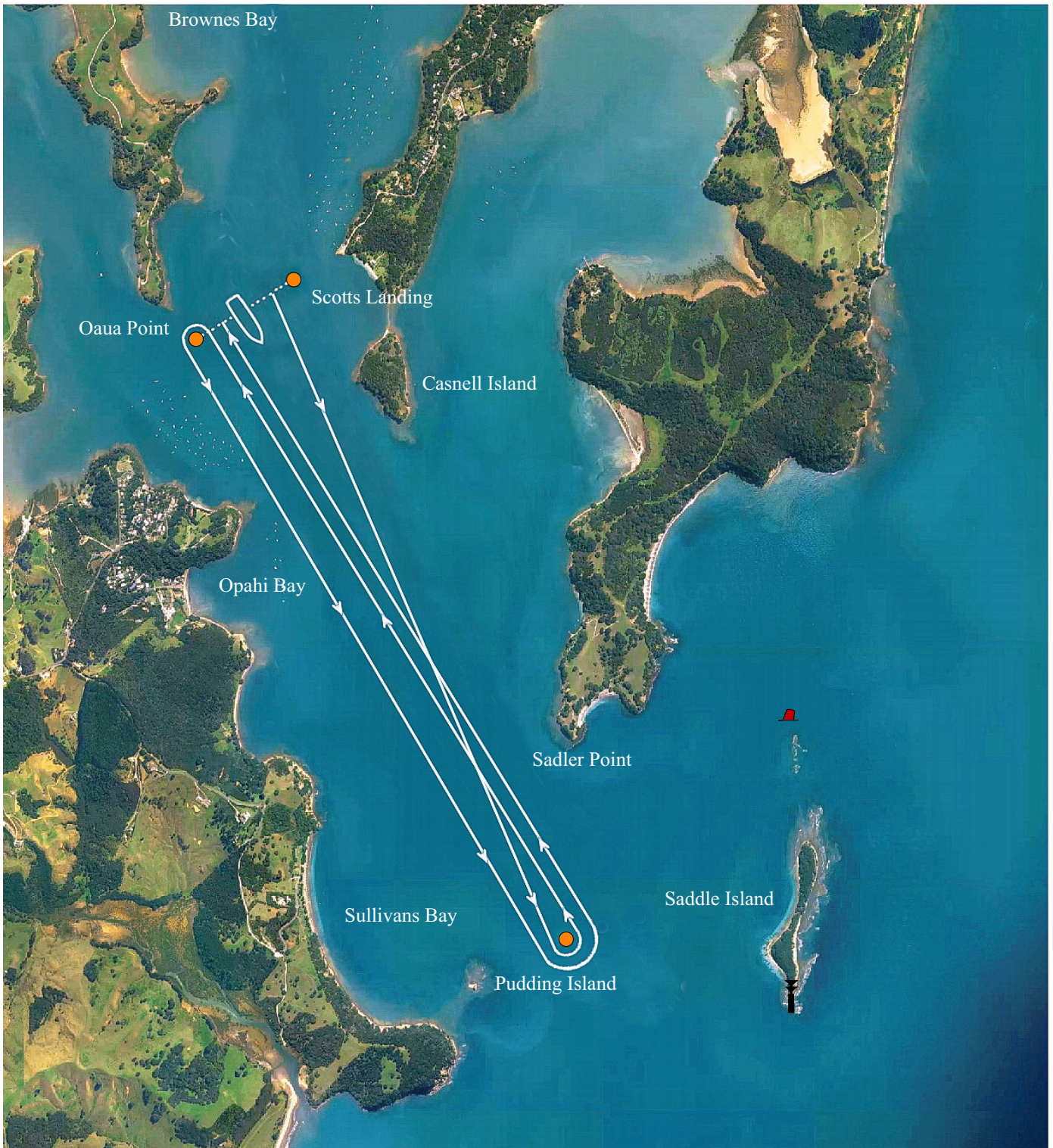
The ODM start buoy is a fairway mark for the second leg of the course.

Mahurangi Cruising Club Regatta - Course #5

ALTERNATIVE COURSE FOR STRONG EASTERLY CONDITIONS

For Te Haupa and Centreboard Classes

DIAGRAM ONLY. NOT TO BE USED FOR NAVIGATION. PLEASE CONSULT AN OFFICIAL CHART



COURSE #5 - TE HAUPA TROPHY ALTERNATIVE COURSE FOR STRONG EASTERLY CONDITIONS

Startline is between the committee boat moored off Oua Point and the Outer Distance Mark (ODM) laid in a Northeast direction towards Scotts Landing. Start in a south easterly direction, to take the Pudding Island Mark (set between Sullivans Bay and Saddle Island) port, then the laid finish mark off Oua Point (Southwest of the Jane Gifford) port, then back to the mark off Pudding Island port, to finish between the committee boat and the finish mark off Oua Point.

This is twice round the course.

The Start and Finish marks are not the same, being on opposite sides of the committee boat.